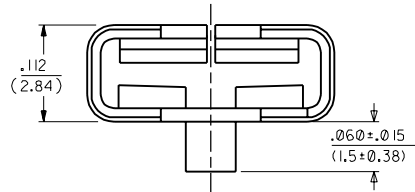
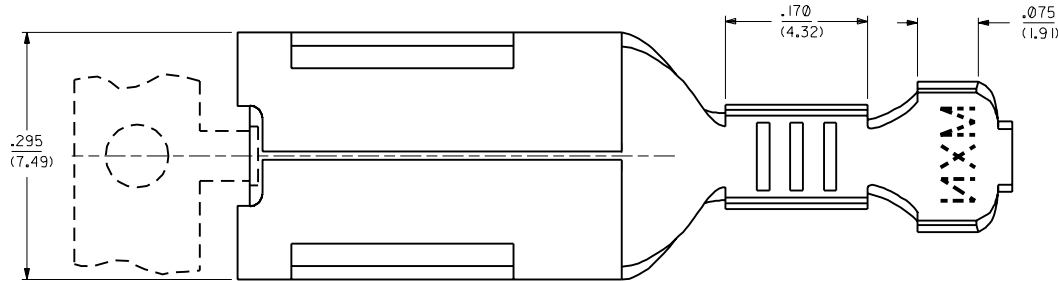


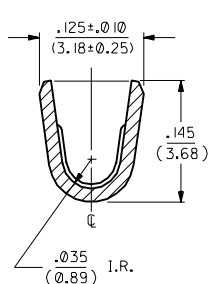
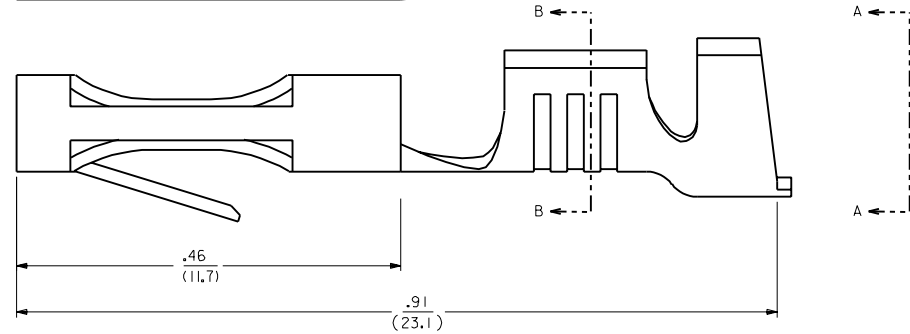
ITEM NO.	ENG. NO.
41422-5001	41422-5001

**NOTES:**

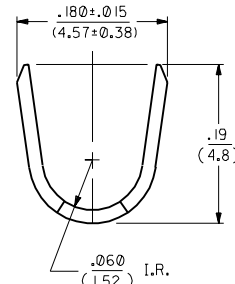
1. MATERIAL: BRASS, ALLOY \*C26000, TEMPER SPRING, .016/(.04) THICK
2. FINISH: ES-88-P901, HOT TIN DIP .0002/(0.005) MIN.
3. PRODUCT SPECIFICATION: NONE
4. IN ANY HOUSING DESIGN USING THIS TERMINAL, ESPECIALLY WHEN LOW INSERTION FORCES ARE EXPECTED, SOME SORT OF LOCKING DEVICE SHOULD BE CONSIDERED.
5. MATES TO .250/(6.35) X .032/(0.8) NOMINAL MALE TAB TERMINAL.
6. CRIMP TO #14 THROUGH #18 AWG. WIRE WITH .031/(0.79) THK. INSULATION.



CRIMP SECTION NOT SHOWN IN THIS VIEW FOR CLARITY.



**SECTION B-B**



**VIEW A-A**

C	ADD TAB HEIGHT DIM. UCR2000-0114 DSTAMBAU 08/13/99
B	ADD TAB COIN UCR1999-0220 WANG 98-10-02
A	REMOVE "X" PER ECN* U50091 94/08/19 MAB

DIMENSIONS SHOWN METRIC (INCH)		UNLESS OTHERWISE SPECIFIED TOLERANCES: ANGULAR ± .030		MFG. SH. REV. LTR.		REVISE ONLY ON CAD SYSTEM	
INCH		METRIC		TITLE		TERMINAL, PUSH-ON, CRIMP	
3 PLACE	± .006	---	---	PART NO.		MOLEX INCORPORATED	
2 PLACE	± .01	± 0.15	---	LITL.EJLL.		69532	
1 PLACE	---	± 0.3	---	SHEET NO.		1 OF 1	
DRAFT WHERE APPLICABLE MUST REMAIN WITHIN DIMENSIONS				DATE		94/08/19	
DRAWN BY: MAB		CHKD. BY: KBP		FILE NAME		SD-41422-5***	
APP'D. BY: RAS		SCALE: 10:1		THIS DRAWING CONTAINS INFORMATION THAT IS PROPRIETARY TO MOLEX INC. AND SHOULD NOT BE USED WITHOUT WRITTEN PERMISSION.		REV. SIZE	
				CP		C	

41422